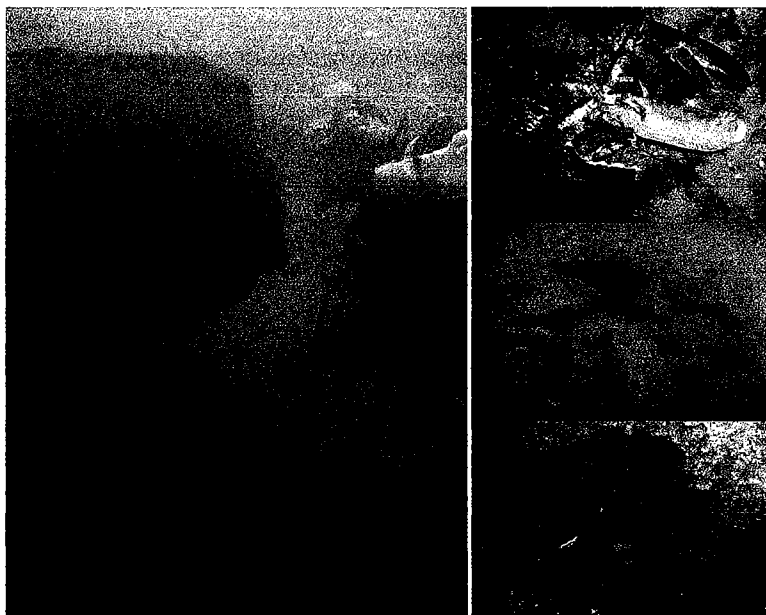


Massachusetts Division of Marine Fisheries Boston Harbor Artificial Reef



Marine Fisheries

A Commonwealth of Massachusetts Agency



The Division of Marine Fisheries recently completed the construction of a 1.7-acre complex of six individual cobble-boulder reefs in Boston Harbor. Located at and around position N 42° 20.63' W 070° 54.41', the reefs are west of Calf Island and southeast of Aldridge Ledge. The 3,900 ft² rocky units provide enhanced structure over the seabed. Initial monitoring studies appear to indicate a wealth of marine life utilizing the new reef structure.

The reefs are situated in an ideal location for recreational diving and dive training and/or fishing. Ranging in depth from 30-36 ft, the reefs offer the relief necessary for attracting marine life, while providing interesting structure for divers. Since completing reef construction, *Marine Fisheries* has received substantial interest from local divers and fishermen and encourages further public use of the artificial reef for fishing and diving.

Additional information on the reef can be found at the *Marine Fisheries* website: <http://www.mass.gov/dfwele/dmf/programsandprojects/hubline/sediment.htm#hub> or by contacting Julie Barber (julie.barber@state.ma.us, 508-990-2860 ext. 148) or Robert Glenn (robert.glenn@state.ma.us).

